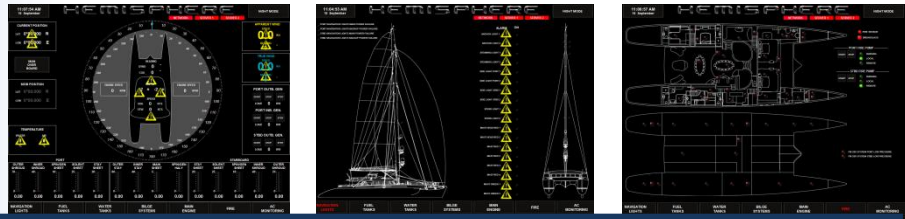




# MONITORING



## Radio Zeeland DMP Monitoring

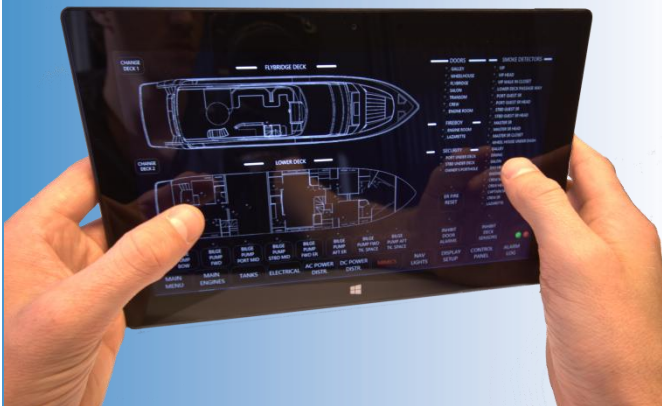
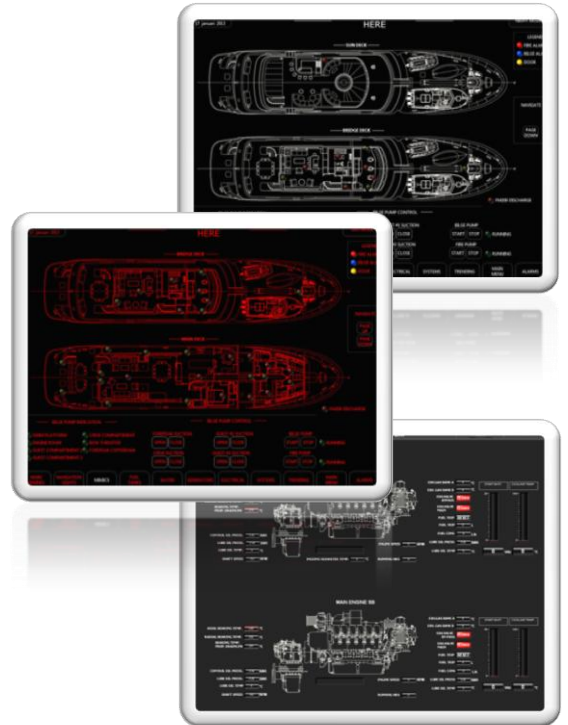
Radio Zeeland DMP monitoring provides software solutions for any alarm and monitoring system. We design and engineer software for some of the worlds most prestigious yachts. With Radio Zeeland DMP alarm monitoring systems your custom yacht will have a customized system that meets all demands.

### Night view mode:

The monitoring pages can be set to night view mode causing all texts, drawings and gauges to turn into any other desired color. The most common night view colors are Blue and Red, but any other color is possible.

### Full Custom:

Alarm and monitoring systems are custom in nature, as every vessel is Different. Radio Zeeland DMP has a software engineering team to fully customize your monitoring pages. Specials can be developed and engineered to your preferences, creating your highly personal system.



### Monitoring tablet:

Radio Zeeland DMP even offers the possibility to deliver a tablet with the entire monitoring system installed. The tablet can be used to monitor alarms in the wheelhouse, or captains and head engineers can monitor the vessel from any place onboard, provided that there is a Wi-Fi connection.

### Integrated tablets:

A docking station for the tablet can be built in to the wheelhouse panels themselves to create a secure place for the tablet where it can be charged at the same time.



RADIO ZEELAND DMP  
www.radiozeeland.com

# MONITORING

## Historical trending

All analog data is stored on the local PC's every 2 minutes to ensure no valuable data is lost. It can be viewed in the software or opened in a spreadsheet program.

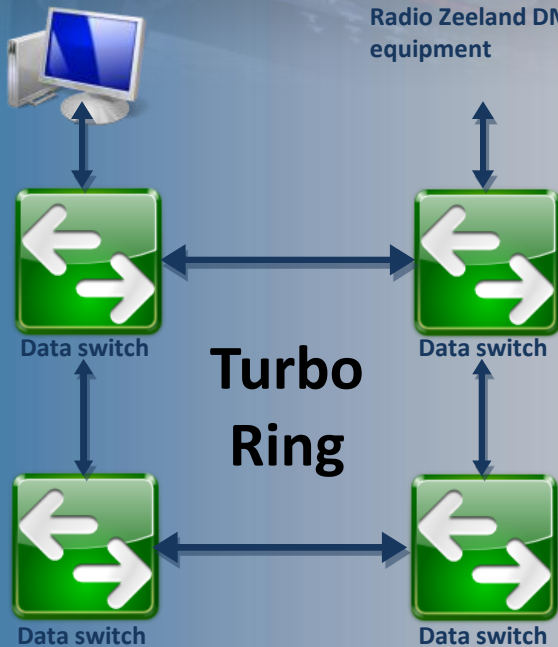
## UMS/ Watch alarm

Radio Zeeland DMP has valuable experience with Unmanned Machinery Space systems.



Monitoring PC

I-O devices such as  
Radio Zeeland DMP  
equipment



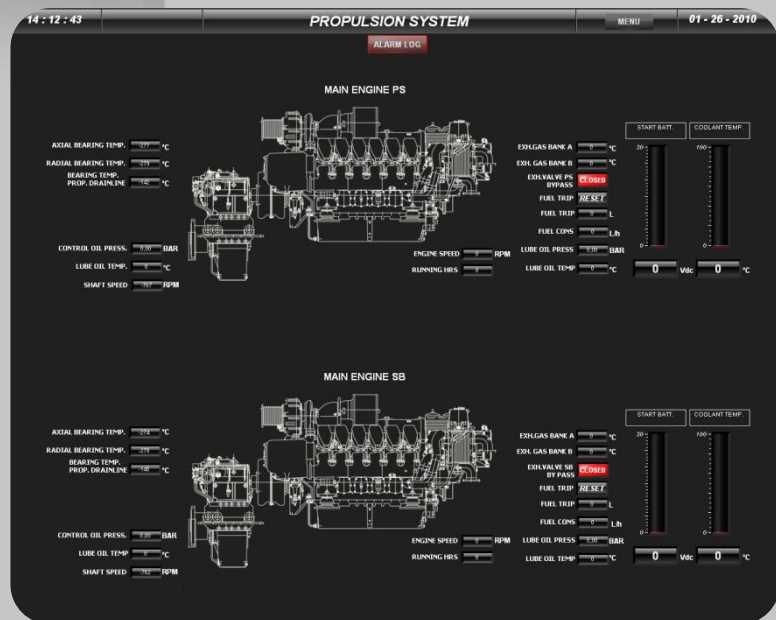
## Turbo ring

Our network is set up in a turbo ring, providing all PC's with a dependable connection. All PC's display the same information and have the same functionality. Data is acquired by the server and is distributed through TCP/IP. The Moxa-switch enabled ring ensures a reliable network system.

## Communication protocols

Radio Zeeland DMP has years of experience in designing custom alarm and monitoring systems. These custom pages are based upon a number of communication protocols. Following are the most common protocols Radio Zeeland DMP works with. Other protocols than motioned below are possible.

- MODBUS (TCP)
- CAN BUS (J1939)
- NMEA
- Proprietary languages



## System diagnostics

The AMS system provides extensive network information, which can be of great value when trouble shooting the network.

Dealer:

